

Elegant Outdoor Lighting

A Perfect Blend of Art, Design, and Quality



You wouldn't cut corners with your client's interior decorating so why settle for less when you decorate your client's outdoor living areas?

Since 1993, P.M. Lighting has been serving professionals in the outdoor lighting industry, providing one of the highest quality lines of architectural grade fixtures made from copper, brass, and other commercial grade materials.

Our solid copper, energy efficient fixtures are quality crafted in the USA to the highest of standards, guaranteed to last a lifetime. All copper fixtures are available in a variety of standard and custom finishes.



BRIGHT POLISHED

BRUSHED SATIN

CUSTOM ANTIQUE

CUSTOM BLACK

PATH & AREA LIGHTS

Path & Area lighting illuminates walkways, pathways, and patio areas and adds beauty to surrounding gardens and other outdoor living spaces. Choose from a variety of styles, LED lamp options and your choice of copper finishes. Mounting options include traditional power stakes (from 12" to 40" in height) or power surface mounts (from 4-1/2" to 24" in height) to meet your custom design needs. See PG 9 for more information on power stakes and mounts.



PM7 FULL 6" PATH



PM7 HALF 6" PATH



PM7XLC 11" ESTATE PATH



PM8-STM DOME PATH



PM7L FULL 7-1/2" PATH



PM7L 2 TIER PATH



PM7L HALF 7-1/2" PATH



PM7 MINI 4" PATH

SERIES	A FINISH	B TYPE	C LAMP
PM7	P - POLISHED S - SATIN A - ANTIQUE B - BLACK	S - SCREW † (PM7 & PM7M ONLY)	SEE LAMP TABLE LH PG 11
PM5		† ALL PATH TOPS COME WITH BRASS SCREW MOUNTS AS STANDARD. PUSH PIN OPTION HAS BEEN DISCONTINUED	

EXAMPLE: PM7P/S / L3WN2 = POLISHED FINISH 6 INCH FULL TOP PATH LIGHT WITH SCREW MOUNT (INSTEAD OF PUSH-PIN) PLUS 3W LED BI-PIN LAMP IN 2700K



PM5 180° PATH



PM5L 180° PATH

NOTE: POWER STAKE OR SURFACE MOUNT SOLD SEPARATELY (SEE PG 9). FOR A COMPLETE FIXTURE, ORDER YOUR CHOICE OF TOP AND ORDER THE DESIRED POWER STAKE OR SURFACE MOUNT AND LAMP.

MRH SERIES BULLET LIGHTS

MRH Series bullet style directional lights offer an array of design options to meet different application and lighting needs. Choose from a variety of styles to achieve your custom design requirements including lens type, lamp beam spread, shroud design, up or down lighting, and with or without eyebrow. Available in a variety of LED lamp options along with your choice of mounting options and copper finishes. See PG 9 for ground stakes and surface mount options.

STYLE	A FINISH	B LENS TYPE	C USE	D EYEBROW	E LAMP
MRH	P - POLISHED S - SATIN A - ANTIQUE B - BLACK	1 - PRISMATIC 2 - CLEAR	3 - UP 4 - DOWN	8 - WITH 9 - WITHOUT	SEE LAMP TABLE LH PG 11

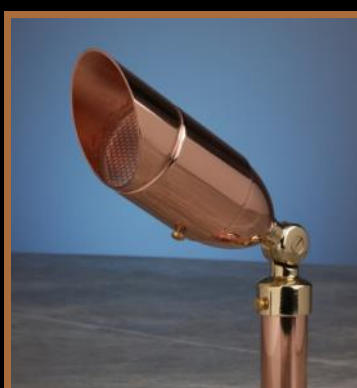
EXAMPLE: MRH-A238 / L5WB2 = ANTIQUE FINISH, CLEAR LENS, UP LIGHT APPLICATION, WITH EYEBROW, PLUS 5W LED WFL LAMP IN 2700K



MRH-LED



CLEAR LENS



PRISMATIC LENS



WITHOUT EYEBROW



LIPSTICK MINI-SPOT

**MOONLIGHT
SHROUD**



MRH SERIES ACCESSORIES



CLIP-ON SHIELD

**DROP-IN
EFFECTS LENS**



**MRSM SURFACE
MOUNT**

STYLE	A FINISH	B LENS TYPE	C USE	D WIRE EXIT	E EYEBROW
MRSM	P - POLISHED S - SATIN A - ANTIQUE B - BLACK	1 - PRISMATIC 2 - CLEAR	3 - UP 4 - DOWN	5 - BOTTOM 6 - SIDE 7 - SIDE (25')	8 - WITH 9 - W/OUT

EXAMPLE: MRSM-P2368 / L5WB2 = POLISHED FINISH, CLEAR LENS, SIDE EXIT WIRE, WITH EYEBROW, PLUS 5W LED WFL LAMP IN 2700K

PM5 SERIES DIRECTIONAL LIGHTS

PM5 Series directional lights are one of the most versatile fixtures to achieve accent lighting for a variety of applications. With its 180° shield, this unique fixture is perfect for lighting dormers on the roof, garden beds, statues, ornamental trees and plantings. It also works well as a directional path light. Use the optional glare clip to shield the light source. Available in a variety of LED lamps and with your choice of mounting options and copper finishes. See PG 9 for stakes and surface mount options.



PM5 ON SWIVEL ARM



PM5 W/ GLARE CLIP



PM5L ON SWIVEL ARM



SW-ARM



PM5 PATH LIGHT



PM5L PATH W/ GC



PM5L PATH LIGHT

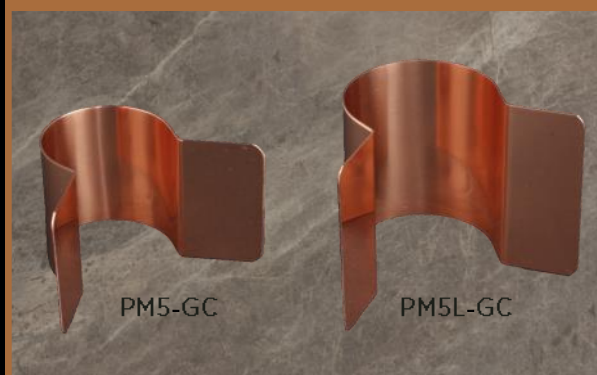
FOR SWIVEL ARM APPLICATIONS,
USE (GS) GROUND STAKE OR
(SM) SURFACE MOUNT.

FOR PATH LIGHT APPLICATIONS,
USE (PS) POWER STAKE OR
(PSM) POWER SURFACE MOUNT

SERIES	A FINISH	B OPTIONS	C LAMP
PM5 PM5L	P - POLISHED S - SATIN A - ANTIQUE B - BLACK	SW-ARM † GC	SEE LAMP TABLE LH PG 11
		† FOR SWIVEL ARM APPLICATIONS, USE (GS) GROUND STAKE OR (SM) SURFACE MOUNT. FOR PATH LIGHT, USE (PS) POWER STAKE OR (PSM) POWER SURFACE MOUNT	

EXAMPLE: PM5P-SW / L3WN2 = POLISHED FINISH PM5 TOP PLUS
SWIVEL ARM. 3W LED BI-PIN LAMP IN 2700K. NOTE: STAKE OR
SURFACE MOUNT SOLD SEPARATELY (SEE PG 9)

PM5 SERIES GLARE CLIPS



PM1 SERIES DIRECTIONAL LIGHTS

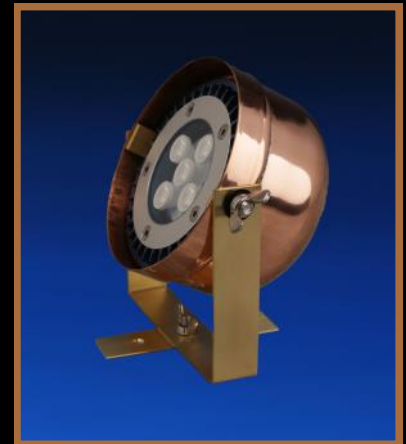
PM1 Series directional lights are an excellent option when more light is needed to wash walls, up-light trees, or illuminate large areas. The 1T tree mount light is perfect for moonlighting from trees. Choose from a variety of styles to achieve your custom design requirements including lamp beam spread and style of glare shield. Available in a variety of LED lamps along with your choice of mounting options and copper finishes. See PG 9 for ground stake and surface mount options.



STYLE	A FINISH	C LAMP
1H 1T	P - POLISHED S - SATIN A - ANTIQUE B - BLACK	SEE LAMP TABLE LH PG 11

EXAMPLE: 1H-P / L6WB2 = POLISHED FINISH, WITH 6 WATT LED, WFL

1H STAKE MOUNT



1T TREE MOUNT



**1SM SURFACE MOUNT
WITH SIHL SHIELD**

STYLE	A FINISH	B WIRE EXIT	D LAMP
1SM	P - POLISHED S - SATIN A - ANTIQUE B - BLACK	1 - WIRE OUT BOTTOM 2 - WIRE OUT BOTTOM (5 FT) 3 - WIRE OUT SIDE 4 - WIRE OUT SIDE (5 FT)	SEE LAMP TABLE LH PG 11

EXAMPLE: 1SM-P13 / L6WB2= POLISHED FINISH, SIDE EXIT, 6W LED, WFL 2700K

PM1 SERIES SHIELD OPTIONS



SIH HALF SHIELD



SIHL HALF SHIELD



SIF FULL SHIELD



SIFL FULL SHIELD

PM12 SERIES DIRECTIONAL LIGHTS

PM12 Series directional lights are widely favored by lighting designers to illuminate dormers, soft washing on walls and sculptures, or accent lighting. Choose the standard PM12 for traditional stake or surface mounting or the NPT version to mount in any 1/2" threaded NPT hole. Optional glare shield is available to help hide the light source. Available in a variety of LED lamps along with your choice of mounting options and copper finishes. Each fixture has dual bi-pin G4/G6.35 base sockets for double the light output. See PG 9 for ground stakes and surface mount options.



PM12 STAKE MOUNT



PM12 WITH SHIELD

SERIES	A FINISH	B OPTIONS	C LAMP
PM12	P - POLISHED S - SATIN A - ANTIQUE B - BLACK	LV - LOUVER 3 - UP ‡ 4 - DOWN ‡	SEE LAMP TABLE LH PG 11

EXAMPLE: PM12P/LV = POLISHED FINISHED PM12 WITH LOUVERED SHIELD. NOTE: ‡ UP & DOWN OPTION FOR PM12 DRAIN HOLES LOCATION

PM2 SERIES & PM22 SERIES LED BAR LIGHTS

PM22 Series LED Light Bar fixtures have a low profile design to softly illuminate architectural elements, roof lines, and garden sculptures. With a slim 1 inch end profile, the PM22 Series fixtures can be easily hidden from view. See PG 9 for ground stakes and surface mounts.

Optional NPT Mount available.



PM22 3-LED BAR



PM22 6-LED BAR

PM2 Series fixtures are designed for accent and specialty application needs. The original PM2 hanging light has a flexible J-hook to hang from tree limbs or over arbor runners. The PM2-SM down light is perfect to illuminate patios and decks from overhead or from the ceiling.



PM2 STANDARD



PM2-SM

SERIES	A FINISH	B OPTIONS +	C LENS +	D LAMP +
PM2 PM22	P - POLISHED S - SATIN A - ANTIQUE B - BLACK	SM - SURFACE MOUNT	P - PRISMATIC C - CLEAR	SEE LAMP TABLE LH PG 11

EXAMPLE: PM2P-SMP = POLISHED FINISHED PM2 WITH SURFACE MOUNT AND PRISMATIC LENS. NOTE: + OPTION - PM2 ONLY

DECK, STEP AND PATIO LIGHTING

P.M. Lighting offers several types and styles of outdoor lighting fixtures to beautifully illuminate decks, patios, porches, and hardscapes. From traditional PM8 Series deck lights to our PM8-SL rock wall lights, designers have a wide array of choices to meet their lighting application needs. Available in a variety of LED lamps along with your choice of protective lens covers and copper finishes.



PM8 WALL MOUNT



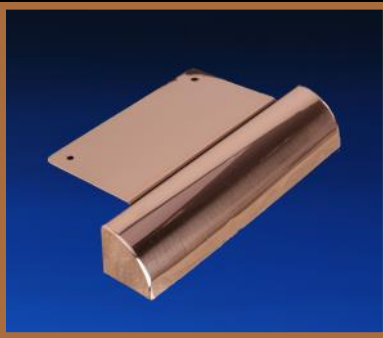
PM8-SM SURFACE MOUNT



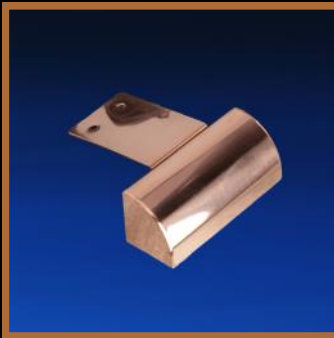
PM4 UP/DOWN LIGHT



PM4-SM UP/DOWN



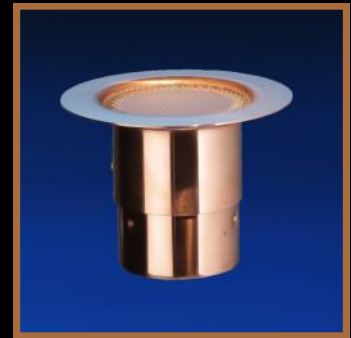
PM8-SL 8" LENGTH



PM8-SL4 4" LENGTH



PM8-ST STEP



MRGF
RECESSED LIGHT

SERIES	A FINISH	B OPTIONS
PM4 PM8 MRGF OTHER	P - POLISHED S - SATIN A - ANTIQUE B - BLACK	SM - SURFACE MOUNT † SL - ROCK WALL VERSION ‡ ST - STEP LIGHT ‡ STM - STAKE MOUNT ‡
	C LENS	D LAMP
	P - PRISMATIC * C - CLEAR * L - ACRYLIC LENS ‡ VL - VENTED LENS ‡ CT - CAPPED ♦	SEE LAMP TABLE LH PG 11



MRGF-ST STEP LIGHT OPTIONS



PM7LG
HANGING LIGHT



PM7XLC PATH TOP &
2LPSM11 BASE MOUNT

EXAMPLE: PM8P-SL= POLISHED FINISHED PM8 ROCK WALL LIGHT WITHOUT LENS . NOTE: LENS STANDARD ON LED FIXTURES

† PM8 AND PM4 SERIES

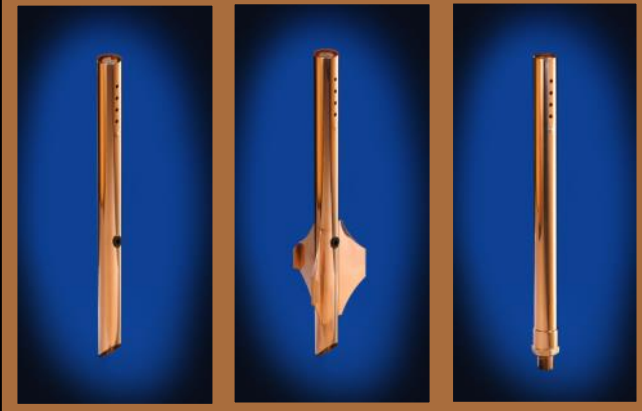
♦ PM4 SERIES ONLY

‡ PM8 SERIES ONLY

* MRGF ONLY

STAKES & MOUNTING OPTIONS

POWER STAKES—12" TO 40"

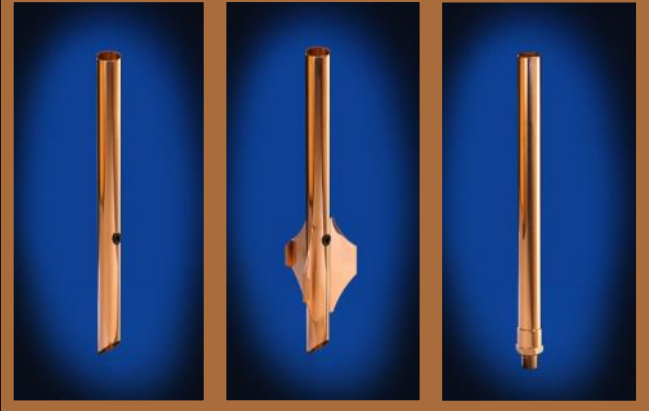


PS1

PS2

PS3-NPT

GROUND STAKES—9" TO 40"



GS1

GS2

GS3-NPT

POWER STAKES FOR PATH LIGHT TOPS

STYLE†	A FINISH	C STAKE TYPE
PS12 PS16 PS20 PS24 PS30 PS40	P - POLISHED S - SATIN A - ANTIQUE B - BLACK	1 - STANDARD 2 - WITH STABILIZING FINS 3 - NPT THREADED END
	† HEIGHT IN INCHES	

EXAMPLE: PS20-P1 = POLISHED FINISH, 20 INCH STAKE WITH STANDARD ANGLE CUT BOTTOM

GROUND STAKES FOR DIRECTIONAL LIGHT HEADS

STYLE†	A FINISH	C STAKE TYPE
GS9 GS12 GS16 GS20 GS24 GS30 GS40	P - POLISHED S - SATIN A - ANTIQUE B - BLACK	1 - STANDARD 2 - WITH STABILIZING FINS 3 - NPT THREADED END
	† HEIGHT IN INCHES	

EXAMPLE: GS9-P2 = POLISHED FINISH, 9 INCH STAKE WITH STABILIZING FINS AND ANGLE CUT



DELUXE MOUNT

POWER DELUXE
MOUNT



SMS-NPT



4-1/2" STD. MOUNT

SURFACE MOUNTS

STYLE	A FINISH	C HEIGHT
SM DM PSM PDM	P - POLISHED S - SATIN A - ANTIQUE B - BLACK	1 = 1-1/2 INCH 4 = 4-1/2 INCH 9 = 9" 12 = 12 INCH 16 = 16 INCH 20 = 20 INCH
(P)DM = DELUXE MOUNT DECORATIVE COVER OPTION AVAILABLE ON 4-1/2" AND TALLER		

C—WIRE & EXIT

1 - WIRE OUT BOTTOM 2 - WIRE OUT BOTTOM (5 FT) 3 - WIRE OUT SIDE	4 - WIRE OUT SIDE (5 FT) 5 - WIRE OUT BOTTOM (25 FT) 6 - WIRE OUT SIDE (25 FT)
--	--

EXAMPLE: SM-P43 = POLISHED FINISH 4-1/2" STANDARD MOUNT WITH WIRE OUT THE SIDE

PM3 SERIES WELL LIGHTS

P.M. Lighting's line of in-ground well lights are unsurpassed in the industry and have been the foundation for wall washing and up lighting of trees in professional systems for decades. The PM3C Copper Series sets the standard in this category of fixtures while the PM3A Aluminum Series offers a value alternative. Our unique MRG copper mini-well lights are perfect for lighting ornamental trees. Available in a variety of LED lamps.



3CL



3AL



3CNL2 WITH TRIM RING



3ANL

SERIES	A STYLE	B LENS COVER	C TRIM RING ‡	E LAMP
3A 3AN	<u>ALUMINUM</u> ANGLE CUT FLAT CUT	ADD "L" NEXT OR ORDER VENTED LENS SEPARATELY	2 - COPPER 3 - ALUMINUM ‡ FLAT CUT ONLY	SEE LAMP TABLE LH PG 11
3C 3CN	<u>COPPER</u> ANGLE CUT FLAT CUT			

EXAMPLE: 3CNL2 / L6WB2 = FLAT CUT COPPER GIMBLE WELL LIGHT WITH LENS, COPPER TRIM RING, PLUS 6W LED PAR36 LAMP, WIDE FLOOD IN 2700K



LENS COVERS

STYLE	A FINISH	B LENS TYPE	C EYEBROW	D LAMP
MRG	P - POLISHED S - SATIN A - ANTIQUE B - BLACK	1 - PRISMATIC 2 - CLEAR	3 - WITH 4 - W/OUT	SEE LAMP TABLE LH PG 11

EXAMPLE: MRG-P13 / L5WB= POLISHED FINISH, PRISMATIC LENS, WITH EYEBROW PLUS 5W LED WIDE FLOOD LAMP

MRG MINI-WELL LIGHTS



CLEAR LENS



PRISMATIC LENS

POWER TRANSFORMERS & ACCESSORIES

P.M. Lighting offers a full line of transformers and accessories to provide a complete turn-key outdoor lighting system for professionals. Our accessories are manufactured by highly respected OEM companies such as Intermatic®, Sylvania®, and CREE® to name a few. We are proud to be a partner with these fine companies to offer the best quality outdoor lighting accessories in the industry.

MULTI-TAP PROFESSIONAL TRANSFORMERS



MTS SERIES
150W, 300W, 600W, 900W
12-15V TAPS

EMTS SERIES
300W, 600W, 900W
12- 18, 20, 22V TAPS

DIGITAL TIMERS, LAMPS & ACCESSORIES



IT-04



IT-05



PHOTOCELL



DRIVER CAP



LAMP OPTIONS - TABLE LH

STYLE	A TYPE	D WATTS		E BEAM	F COLOR
PAR36 MR16 MR8 MR11 G4 G6	L - LED † Special Order	2W 3W 4W 5W 6W	7W 9W 12W† 15W†	A - NSP† B - WFL C - VWFL N - BI-PIN	2 - 2700K 3 - 3000K 5 - 5700K†

EXAMPLE: PAR36-L6WB2 = 6 WATT LED PAR36, WIDE FLOOD (38° BEAM SPREAD) IN 2700K COLOR

WARRANTY INFORMATION

BASIC WARRANTY

Since 1993, P.M. Lighting has proudly manufactured one of the highest quality lines of architectural grade outdoor lighting fixtures for the professional market. Quality crafted in the USA, our products are designed to meet the needs and demands of even the most discerning designers, contractors, and clients. As such, P.M. Lighting, LLC warrants its professionally sold and installed landscape lighting fixtures to be free from materials and manufacturing defects for a lifetime.

GENERAL PROVISIONS

Warranty coverage begins at the completion of installation and registration of client's system with P.M. Lighting, LLC. Warranty is not transferable and is extended only to the original purchaser. P.M. Lighting, LLC will repair or replace products due to defects in materials or workmanship at its sole discretion. This warranty liability is limited to the replacement or repair of the defective materials and does not cover any other cost beyond this provision.

WARRANTY SCHEDULES

All P.M. Lighting fixtures carry a Limited Lifetime Warranty. All other system components such as transformers, bulbs, LED components, timers, etc. are warranted by the original equipment manufacturer (OEM) of each item. Complete details for all warranties are available online or by calling our corporate office.

OUR FIXTURES ARE ETL LISTED AND
COMPLIANT WITH UL STD 1838



1094 North Main St. • Ashland City, TN, 37015
Phone: 615.792.6884 • Fax: 615.792.6898

pmlighting.com