

MRH Series (Model MRGF)

Copper Flush Mount Light

Solid Copper Flush Mount Light with copper inner sleeve for decks and patios. Installs directly in 2-3/4" diameter hole.

Dimensions : 4" diameter x 3" long

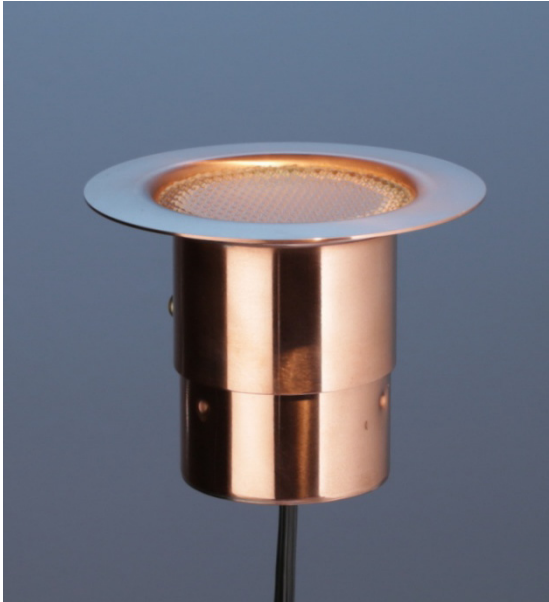
Wire Lead: 18/2 landscape cable (includes Quick Connectors)

Lens: Prismatic Tempered Borosilicate Glass lens standard

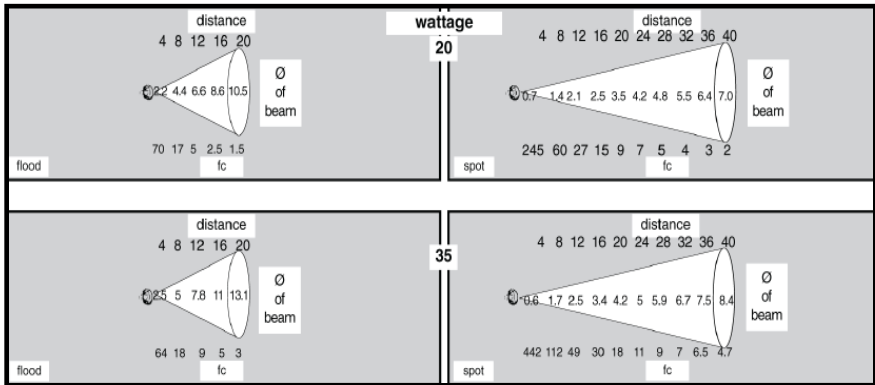
Lamp: MR16 style 5 watt LED Lamp standard. Optional 4 or 7 watt LED or choose halogen lamp (35 watt maximum)

Options: Choose with mounting holes (shown) or without for sleek no screw look.

Optional glare shield available as custom order.



PHOTOMETRICS



Conforms to UL Standard 1838



3182781